

**INTELLIGENT
DRIVES &
CONTROLS
FOR SHUTTERS
AND AWNINGS**



INSTALLATION & OPERATING INSTRUCTIONS

Instructions and notes for installation and operation

Radio Receiver AFE



Attention:

It is important for the safety of persons
to follow these instructions.
Keep these instructions for future reference.



TABLE OF CONTENTS

Radio Receiver AFE

! Safety instructions	Page 3
i Function overview	
Function & Range	Page 4
Technical data	Page 4
🔧 Installation distance	Page 5
🔌 Wiring plan	Page 5
📡 Programming	
Pairing handheld transmitter with Radio Receiver AFE	Page 6
Delete the channel of a transmitter	Page 6
§ EU Declaration of conformity	Page 7



✉ CONTACT

3T-Components GmbH & Co. KG

Grete-Schickedanz-Str. 5
D-55545 Bad Kreuznach

Email: info@3t-components.de

Tel: +49 (0)671 887 673-0

Fax: +49 (0)671 887 673-99

Opening hours:

Monday – Friday
8.00 – 16.30

Learn more about us:



www.3t-components.de

© Copyright notice

All contents of these instructions, in particular texts, photographs and graphics, are protected by copyright. Unless expressly indicated otherwise, the copyright is held by 3T-Components GmbH & Co. KG. Please ask us if you wish to use the contents of this document.

! SAFETY INSTRUCTIONS

Please read these important safety instructions before commissioning!

Incorrect installation and operation can cause serious injury and damage to property. Failure to comply with this user information, including all instructions and provisions contained herein, will void the warranty and guarantee. The manufacturer or supplier shall not be liable for any injury or damage to property resulting from failure to comply with these instructions.



This symbol indicates danger due to electrical energy. Danger to persons and objects may arise if the associated information is not observed!

GENERAL SAFETY INSTRUCTIONS

- Risk of fatal electric shock when working on electrical installations.
- The electrical connection, installation and commissioning of the receiver must only be carried out by qualified personnel.
- The receiver must only be installed and connected when the power supply is switched off.
- The relevant regulations and guidelines must be strictly observed to prevent injury to persons and damage to property.
- Observe safety instructions in accordance with EN 60 335-2-97:2000: The mains connection cable for the drives must be routed internally.
- Installation in accordance with DIN 18073: The roller shutter box cover must be easily accessible and removable.
- Observe regulations when installing in damp rooms (VDE 0100, Parts 701 and 702).
- Each motor requires a receiver. Please never operate multiple motors via a single receiver.
- Do not use faulty devices: Never use faulty devices.
There is a risk of personal injury and property damage due to electric shock or short circuits.
- Keep the instructions for future reference.



This symbol indicates general danger. Failure to comply may result in danger to persons and property!

IMPROPER USE

- Users must be instructed on how to operate the tubular motor correctly.
- Monitor the movement of the roller shutters to ensure that no one is put at risk.
- Do not allow children to play with the motor controls.
- Store remote controls in such a way as to prevent accidental operation (e.g. by children playing).

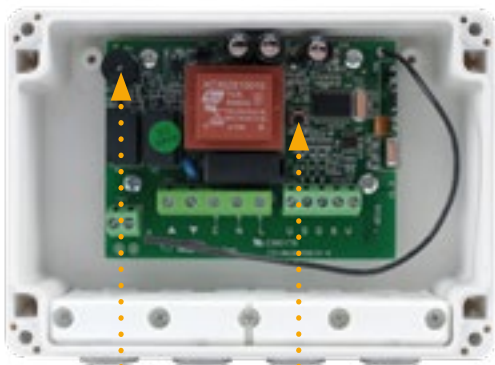


This symbol indicates important information that can ensure the safe and proper use of the appliance.

PROPER USE

- Use the receiver and tubular motors only for automating roller shutters or awnings.
- Use only original components and accessories from the manufacturer.
- The power supply cable for the drives must be routed internally through the conduit to the junction box. Local electrical regulations must be observed.
- For the electrical connection of the receiver and the tubular motors, a 230 V / 50 Hz power supply with a fuse must be available at the installation site.

i FUNCTION OVERVIEW

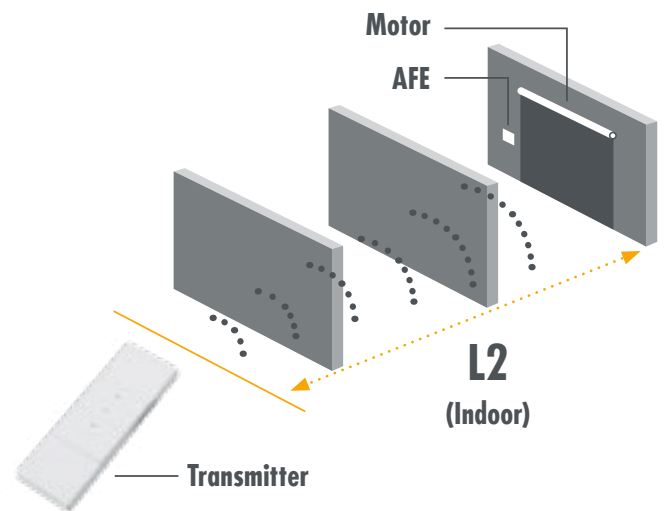
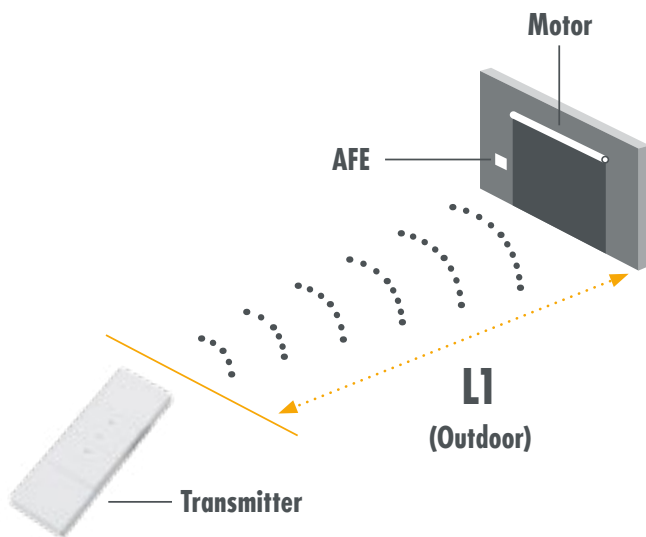


Buzzer

Program button



- Surface-mounted radio receiver for controlling blinds, roller shutters, awnings and gate motors
- Can store up to 20 transmitters from the 3T wireless range
- Multiple wireless receivers can be programmed into a group
- Suitable for indoor and outdoor use (water-resistant, IP54)



Voltage	L1 (Outdoor)	L2 (Indoor)	📶 Frequency
230 V / 50 Hz	200 m	approx. 35 m	433,92 MHz



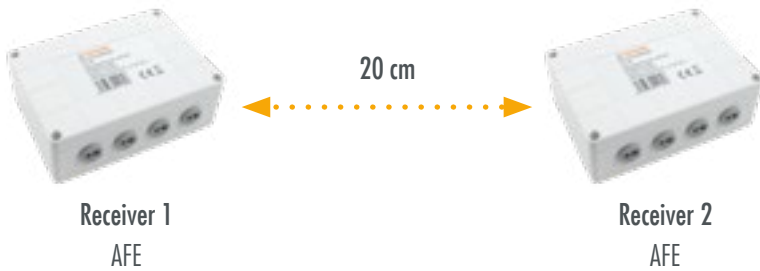
Damage caused by improper use or unprofessional installation will immediately void the guarantee and warranty.

Technical data	
Operating voltage / V AC	230 V / 50 Hz
Switching capacity	for 230 V – roller shutter motors up to 800 W
Standby consumption	5 W
Protection rating	IP54
Operating temperature range	-10 °C to +50 °C
Frequency	433,92 MHz
Range	approx. 35 metres indoors / 200 metres outdoors
Dimensions (LxWxH)	153x108x56 mm
Channels	can store up to 20 channels
Compatibility	Compatible with all 3T transmitters
EAN	4260336110194

INSTALLATION DISTANCE



Minimum distance between receivers: 0.2 m



WIRING PLAN



Connections

(from left to right)

Protective conductor

- ⊕ : PE protective conductor mains
- ⊕ : PE protective conductor motor

Tubular motor / Mains

- ▲ Drive up motor
- ▼ Drive down motor
- C: Neutral conductor motor
- N: Neutral conductor mains
- L: L1 230 VAC

Double-rocker switch

- U: Rocker switch down
- D: Rocker switch up
- G: Pole contact rocker switch



AFE



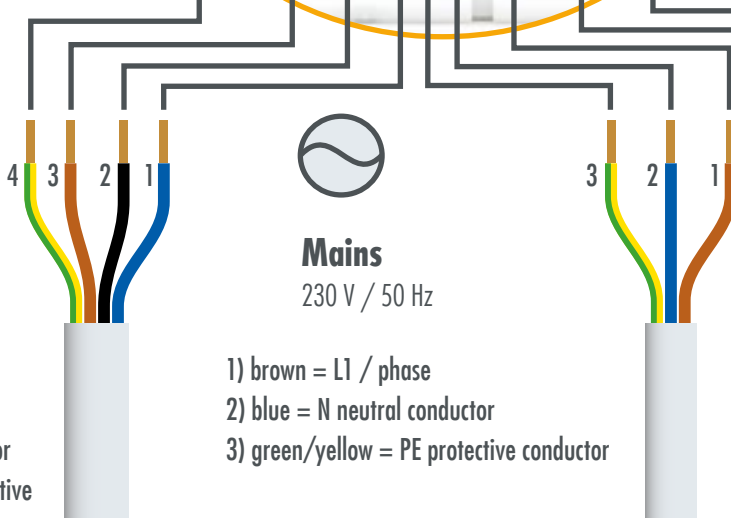
Blind switch can be connected as an option: For opening and closing only (cannot be stopped).



Tubular motor

230 V / 50 Hz

- 1) black = down or up
- 2) brown = down or up
- 3) blue = N neutral conductor
- 4) green/yellow = PE protective conductor



Mains

230 V / 50 Hz

- 1) brown = L1 / phase
- 2) blue = N neutral conductor
- 3) green/yellow = PE protective conductor



Double-rocker switch

230 V / 50 Hz

- 1) Rocker switch down
- 2) Rocker switch up
- 3) Pole contact rocker switch

PROGRAMMING



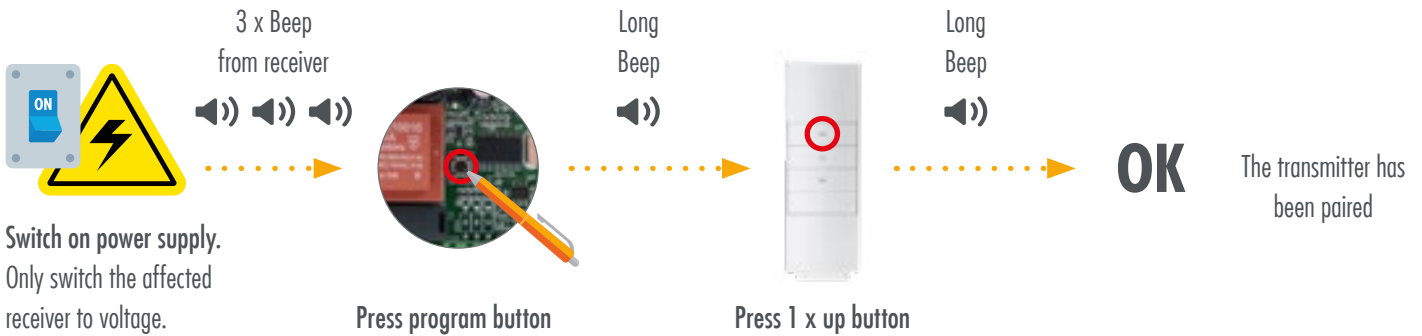
Important when programming, changing or deleting transmitters:

Only one motor at a time may be powered up!

Several radio receivers can be programmed into a group using the same transmission channel.

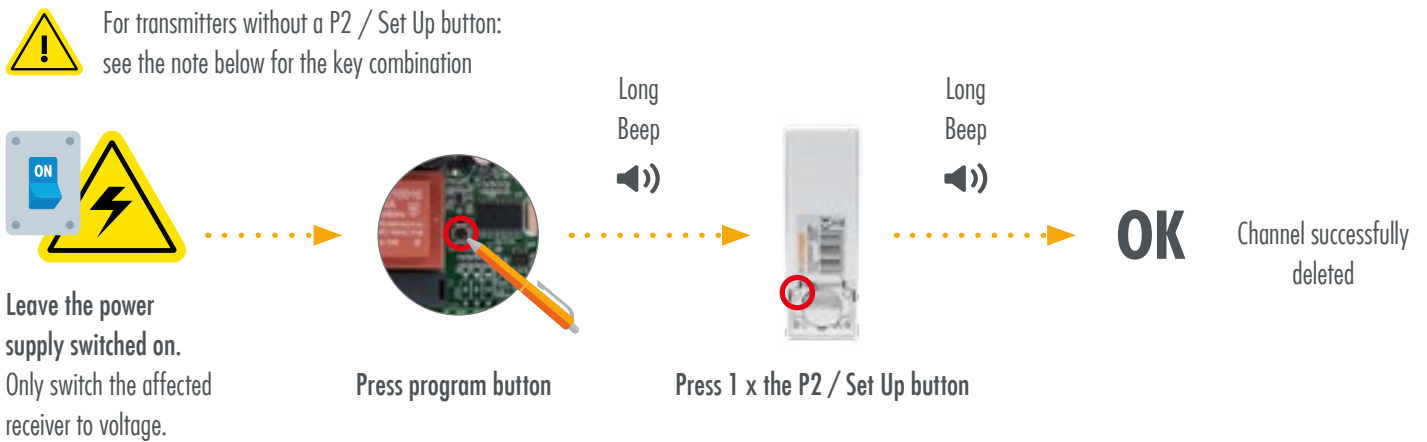
Pairing handheld transmitter with Radio Receiver AFE:

Programming (pressing the buttons) must be completed within 10 seconds, otherwise the system will return to its original state.



Delete the channel of a transmitter:

Programming (pressing the buttons) must be completed within 10 seconds, otherwise the system will return to its original state.



Note:

The following 3T-MOTORS transmitters do not have a P2 / Setup button:



Mini radio transmitter
FMSF



Radio wall transmitter
WS1



Radio wall transmitter
WS2



Radio wall transmitter
WSE2



Radio timer WSTF1



Radio timer WSTF5

Button combination:

Press the Up and Stop buttons at the same time (for FMSF / WS1 / WS2 / WSE2).

Press the Set and Mode buttons at the same time (for WSTF1 / WSTF5).

EU Konformitätserklärung

Wir, die Firma

3T Components GmbH & Co. KG
Grete-Schickedanz-Straße 5
55545 Bad Kreuznach
Deutschland

erklären in alleiniger Verantwortung, dass das weiter unten genannte Produkt

Geräteart: Funkempfänger für Rohrmotoren

Modell Artikelnummer

WEF1	890
WETF1	891
AFE	565
UPE1	571
MFE	570
AFE/LED	566

die grundlegenden Anforderungen der aufgeführten EG/EU-Richtlinien erfüllt:

2014/30/EU	EMV-Richtlinie
2014/53/EU	RED-Richtlinie
2014/35/EU	Niederspannungsrichtlinie
2011/65/EU	RoHS- Richtlinie

angewandte Standards und Verordnungen:

EN 301 489-1 V1.9.2
EN 301 489-3 V1.6.1
EN 300 220-2 V3.1.1
EN 61058-1:2002/A2:2008
EN 61058-1/A2:2008
EN 60669-1:1999/A2:2008
EN 60669-2-1:2004/A12:2010
EN 50581:2012

Bevollmächtigter zur Zusammenstellung der technischen Unterlagen:

Name, Position: Patrick El Hadj-Henni, Geschäftsführer

Bad Kreuznach, 06.03.2019

.....
Datum



.....
Unterschrift

INTELLIGENT DRIVES & CONTROLS FOR SHUTTERS AND AWNINGS

*Service and
quality
make all the
difference!*



Social Media Links

Info, news and tips on roller shutters, awnings, smart home and more:

www.facebook.com/3TComponents



bit.ly/youtube-3TComponents



www.instagram.com/3tcomponents



x.com/3TComponents



3T-Components GmbH & Co. KG

Grete-Schickedanz-Straße 5
D-55545 Bad Kreuznach

Email: info@3t-components.de

Tel: +49 (0)671 887 673-0

Fax: +49 (0)671 887 673-99

www.3t-components.de

Opening hours:

Monday – Friday: 8.00 – 16.30

3T-COMPONENTS
GmbH & Co. KG