

**INTELLIGENT
DRIVES &
CONTROLS
FOR SHUTTERS
AND AWNINGS**



INSTALLATION & OPERATING INSTRUCTIONS

Instructions and notes for installation and operation

Radio hand-held transmitter HSE1 / HSE5 / HSE15

Attention:

It is important for the safety of persons
to follow these instructions.
Keep these instructions for future reference.



TABLE OF CONTENTS

Radio hand-held transmitter HSE1 / HSE5 / HSE15

! Safety, disposal and battery instructions Page 3 – 4

i Function overview
Before commissioning Page 5
Buttons & function Page 5
Technical data Page 5

🔊 Programming
Pairing a hand-held transmitter Page 6
Changing the direction of rotation of the radio motor Page 6
Pairing another hand-held transmitter Page 6
Delete hand-held transmitters Page 7
Roller shutter & blind operating mode Page 7

✖ Troubleshooting
What to do when ... Page 8

§ EU Declaration of conformity Page 9



CONTACT

3T-Components GmbH & Co. KG

Grete-Schickedanz-Str. 5
D-55545 Bad Kreuznach

Email: info@3t-components.de

Tel: +49 (0)671 887 673-0

Fax: +49 (0)671 887 673-99

Opening hours:

Monday – Friday
8.00 – 16.30

Learn more about us:



www.3t-components.de

© Copyright notice

All contents of these instructions, in particular texts, photographs and graphics, are protected by copyright. Unless expressly indicated otherwise, the copyright is held by 3T-Components GmbH & Co. KG. Please ask us if you wish to use the contents of this document.

! SAFETY INSTRUCTIONS

Please read these important safety instructions before commissioning!

Incorrect installation can cause serious personal injury and damage to property.

Failure to comply with this user information, including all instructions and provisions, will invalidate the warranty.

If these instructions are not followed, the manufacturer or supplier shall not be liable for any personal injury or damage to property.



This symbol indicates danger due to electrical energy.
Danger to persons and objects may arise if the associated information is not observed!



This symbol indicates general danger.
Failure to comply may result in danger to persons and property!



This symbol indicates important information that can ensure the safe and proper use of the appliance.

GENERAL SAFETY INSTRUCTIONS

- Only use suitable batteries (3 V / CR2430) and replace them regularly. Only use the same type of batteries; never mix new and old batteries or different types.
- Dispose of used batteries in an environmentally friendly manner and in accordance with local regulations.
- Do not use any metal tools when inserting or removing the batteries to avoid short circuits. Ensure correct polarity according to the labelling on the device.
- Only store and use the hand-held transmitter in dry places. Moisture and strong mechanical impacts (e.g. knocks, dropping) can damage the device and significantly shorten its service life.
- Keep batteries and hand-held transmitters out of the reach of children. Swallowed batteries can lead to life-threatening injuries. If you suspect that batteries have been swallowed, consult a doctor immediately.
- During installation and use, make sure that no metal objects obstruct the radio signal.

IMPROPER USE

- The hand-held transmitter must not be used if it is visibly damaged or if moisture has penetrated. In this case, have it checked or replaced by qualified specialist personnel.
- Keep the hand-held transmitter safe and out of the reach of children. Unintentional operation (e.g. by children playing) can trigger dangerous movements of roller shutters or awnings.
- Children must not play with the appliance or operate it unsupervised.
- Please note that there is a risk of injury if used incorrectly.

PROPER USE

- The hand-held transmitter is designed exclusively for controlling 3T-MOTORS radio tubular motors and 3T-MOTORS radio receivers. Typical applications include roller shutters, awnings and blinds indoors.
- Use is authorised for both private and commercial applications.
- The hand-held transmitter must be programmed correctly before use. Pairing is carried out via buttons on the hand-held transmitter and via the programming process required depending on the receiver or motor.
- Only properly programmed hand-held transmitters guarantee safe control of the connected motors.
- Instruct all users in safe operation.
- This appliance can be used by children aged from 8 years and above and persons with reduced physical, sensory or mental capabilities if they have been given supervision or instruction concerning use of the appliance.
- Check the functionality of the hand-held transmitter regularly, especially if the range decreases or the response is reduced.

! DISPOSAL INFORMATION

1 Separate collection of old devices

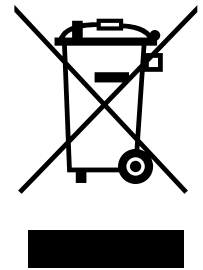
Electrical and electronic appliances that have become waste are referred to as old appliances. Owners of old appliances must dispose of them separately from unsorted municipal waste. In particular, old appliances do not belong in household waste, but in special collection and return systems.

2 Options for returning old devices

Owners of old appliances from private households can hand them in at the collection points of the public waste disposal authorities or at the take-back centres set up by manufacturers or distributors within the meaning of the ElektroG.

3 Meaning of the 'crossed-out wheelie bin' symbol

The symbol of a crossed-out dustbin regularly shown on electrical and electronic appliances indicates that the appliance in question must be collected separately from unsorted municipal waste at the end of its service life.



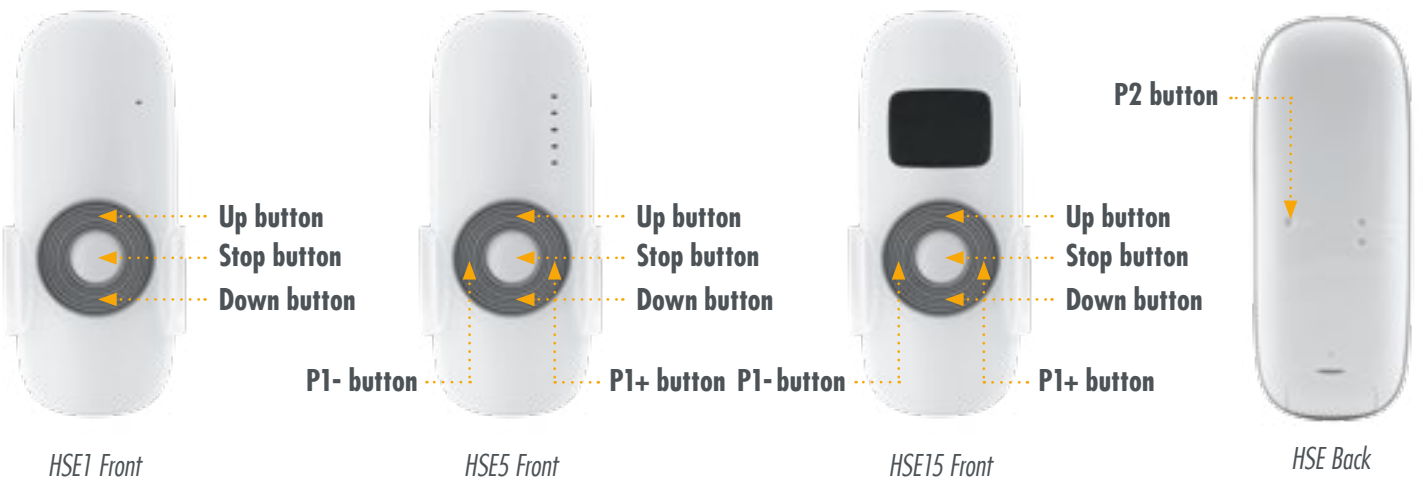
! BATTERY INSTRUCTIONS

- Batteries can be returned free of charge to the point of sale after use.
- The end user is legally obliged to return used batteries.
- At the end of their service life, batteries and accumulators that are no longer usable must not be disposed of with household waste. This is indicated by the crossed-out wheelie bin symbol. The chemical symbols Hg (mercury), Cd (cadmium) or Pb (lead) that may appear below the symbol of the crossed-out dustbin indicate the substances contained.

i FUNCTION OVERVIEW

Before commissioning

- 1) Open the battery compartment on the back
- 2) Insert the battery with the positive side facing up into the battery compartment
- 3) Close the battery compartment to activate the remote control



HSE5 / 5-channel hand-held transmitter

Each indicator light represents a channel. Press the P1+ or P1- button to select the desired channels. To switch to the group channel (all programmed motors or receivers), press the P1+ or P1- button until all indicator lights are lit. You cannot program devices directly to the group channel.

HSE15 / 15-channel hand-held transmitter

Each number on the LCD display represents a channel. Press the P1+ or P1- button to select the desired channels. To switch to the group channel (all programmed motors or receivers), press the P1+ or P1- button until channel 0 appears. You cannot program directly to group channel 0.

Multiple radio transmitters or receivers can be programmed into a group using the same transmission channel

Buttons & function

Up button: Moves the motor upward

Down button: Moves the motor downward

Stop button: Stops the motor

P2 button: To program the transmitter

P1+ button: To select the channel

P1- button: To select the channel



Do not expose the transmitter to moisture or damage it.

If the transmitter's range decreases, the battery should be replaced.

Technical data	
Input voltage	3 V
Frequency	433,92 MHz ± 100 KHz
Transmission power	≤ 10 mW
Operating temperature range	-10 °C to +50 °C
Range	approx. 30 meters indoors / 200 meters outdoors
Battery type	3 V / CR2430
EAN	HSE1: 4260336110361 / HSE5: 4260336110378 / HSE15: 4260336110385

PROGRAMMING



Important when programming, changing, or deleting transmitters:

Only one motor at a time may be powered on!

Multiple radio motors or radio receivers can be programmed into a group using the same transmission channel.

With multi-channel transmitters, each channel must be programmed or transferred individually.

Pairing the hand-held transmitter with a 3T radio-controlled motor, Type R:



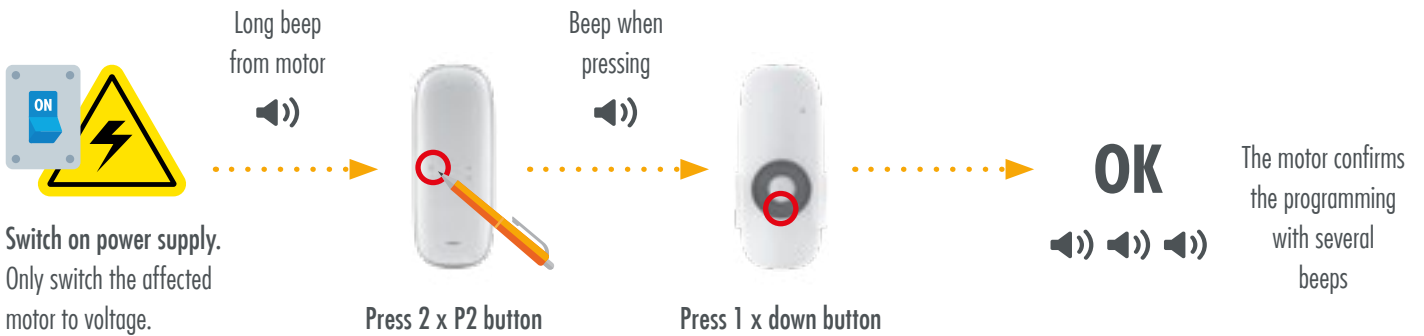
After turning on the power supply, programming (pressing the buttons) must be completed within 10 seconds; otherwise, the motor will return to its default state.



Changing the direction of rotation of the radio motor:



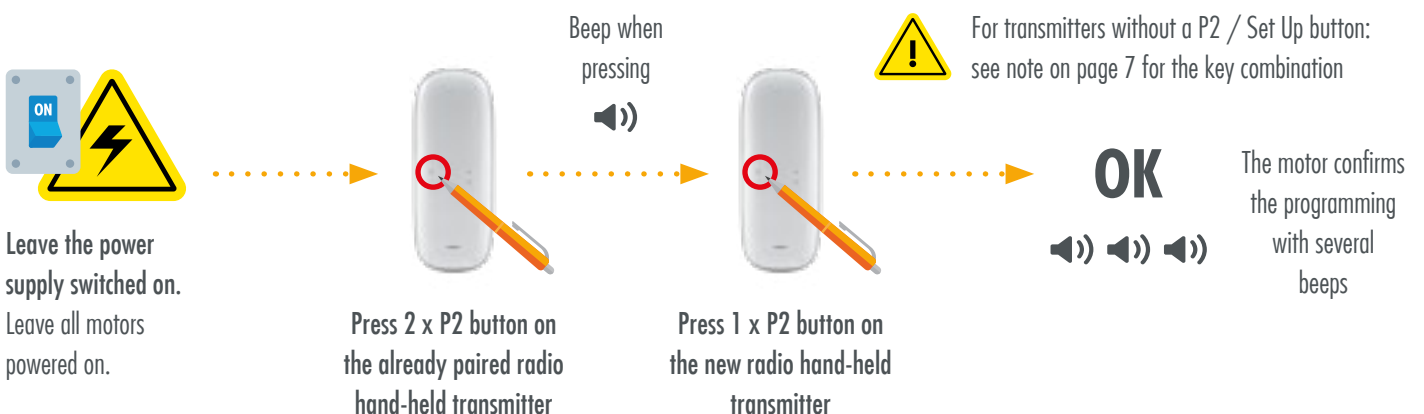
After turning on the power supply, programming (pressing the buttons) must be completed within 10 seconds; otherwise, the motor will return to its default state.



Pairing another hand-held transmitter:



After turning on the power supply, programming (pressing the buttons) must be completed within 10 seconds; otherwise, the motor will return to its default state.



PROGRAMMING

Delete hand-held transmitters:

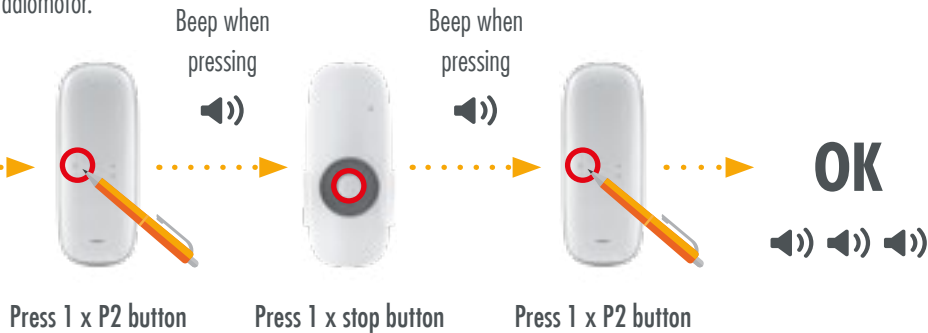
Attention! Deleting a hand-held transmitter deletes all paired transmitters from the radiomotor.

T < 10 sec.

After turning on the power supply, programming (pressing the buttons) must be completed within 10 seconds; otherwise, the motor will return to its default state.



Leave the power supply switched on. Only switch the affected motor to voltage.

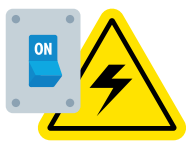


The motor confirms the programming with several beeps

Roller shutter & blind operating mode:

T < 10 sec.

After turning on the power supply, programming (pressing the buttons) must be completed within 10 seconds; otherwise, the motor will return to its default state.



Leave the power supply switched on. Only switch the affected motor to voltage.



The motor confirms the programming with several beeps

This setting allows you to switch from shutter mode to blind mode and vice versa.

Roller shutter operating mode: Motor immediately switches to self-retaining mode when a direction button is pressed.

Blind operating mode: Jog mode possible. Only when the direction button is pressed for longer than 2 seconds is self-holding activated.



Note:

The following 3T-MOTORS transmitters do not have a P2 / Setup button:



Mini radio transmitter
FMSF



Radio wall transmitter
WS1



Radio wall transmitter
WS2



Radio wall transmitter
WSE2



Radio timer WSTF1



Radio timer WSTF5

Button combination:

Press the Up and Stop buttons at the same time (for FMSF / WS1 / WS2 / WSE2).

Press the Set and Mode buttons at the same time (for WSTF1 / WSTF5).

WHAT TO DO WHEN ...

... the radio hand-held transmitter cannot be paired?

- For HSE5 or HSE15, group channel 0 is set (can only be programmed to channels 1–5 or 1–15)
 - The radio motor/receiver was not set to “learning mode” by turning the power supply off and on.
 - Turn the power supply off and on, then perform the programming procedure again.
 - If no beep is heard from the motor or receiver after turning on the power supply, perform the programming procedure anyway and test the transmitter.
 - Programming by pressing the buttons must be done within 10 seconds of turning on the power supply and hearing the beep from the motor or receiver. It must beep when pressed; if it does not beep, press repeatedly until it beeps twice for the P2 button and final beeps are heard after pressing the Up or Down button.
 - The battery is too low or dead.
-

... the radio hand-held transmitter cannot be programmed as an additional transmitter?

- The power supply must remain on.
 - The device should beep when you press the buttons; if it does not beep, press the button repeatedly until it beeps twice for the first channel or once for the second channel.
 - The battery is low or dead.
-

... whether to control blinds or external blinds?

- You can switch the operating mode from “Roller Shutter” to “Venetian Blind” and vice versa by following the programming instructions on page 7:

- Leave the power supply on (connect only the relevant motor to the power supply)
- Press the P2 button once (beep when pressed)
- Press the Up button once (beep when pressed)
- Press the P2 button once
- The motor confirms the programming with several beeps

Roller Shutter Operating Mode: The motor immediately locks into position when a direction button is pressed.

Venetian Blind Operating Mode: Momentary operation is possible. The motor locks into position only when the direction button is held down for more than 2 seconds.

EU Konformitätserklärung
EU Declaration of Conformity

Wir, die Firma
We, the company

3T Components GmbH & Co. KG
Grete-Schickedanz-Straße 5
55545 Bad Kreuznach
Deutschland

erklären in alleiniger Verantwortung, dass das weiter unten genannte Produkt
declare under our sole responsibility that the following product

Geräteart/*Type of product:* Funkfernbedienung / *radio remote control*

Modell <i>Model</i>	Artikelnummer <i>Article-no</i>	weitere Angaben <i>further details</i>
HSE1	850	Batteriebetrieben / <i>battery operated,</i>
HSE5	851	433,92MHz ± 100KHz
HSE15	852	
HSTE1	853	
HSTE15	854	

die grundlegenden Anforderungen der aufgeführten EU-Richtlinien erfüllt:

2014/53/EU Richtlinie über die Bereitstellung von Funkanlagen auf dem Markt
2011/65/EU Richtlinie zur Beschränkung bestimmter gefährlicher Stoffe in Elektro- und Elektronikgeräten

meets the essential requirements of the following EU-Directives:

2014/53/EU *Directive on the making available of radio equipment on the market*
2011/65/EU *Directive on the restriction of the use of certain hazardous substances in electrical and electronic equipment*

angewandte Standards und Verordnungen/*applied standards and regulations:*

EN 60950-1:2006 + AC:2011 + A11:2009 + A12:2011 + A1:2010 + A2:2013

EN 300 220-2 V3.1.1

EN 301 489-1 V2.2.0

EN 301 489-3 V2.1.1

EN 50581:2012

Bevollmächtigter zur Zusammenstellung der technischen Unterlagen:


Authorized person for technical documentation:

Name/*Name*, Position: Patrick El Hadj-Henni, Geschäftsführer / *Managing Director*

Bad Kreuznach,

02.04.2018

.....
Datum/*Date*



.....
Unterschrift/*Signature*

INTELLIGENT DRIVES & CONTROLS FOR SHUTTERS AND AWNINGS

*Service and
quality
make all the
difference!*

Social Media Links

Info, news and tips on roller shutters, awnings, smart home and more:

www.facebook.com/3TComponents



bit.ly/youtube-3TComponents



3T-Components GmbH & Co. KG

Grete-Schickedanz-Straße 5
D-55545 Bad Kreuznach

Email: info@3t-components.de

Tel: +49 (0)671 887 673-0

Fax: +49 (0)671 887 673-99

www.3t-components.de

Opening hours:

Monday – Friday: 8.00 – 16.30



3T-COMPONENTS
GmbH & Co. KG