

**INTELLIGENT  
DRIVES &  
CONTROLS  
FOR SHUTTERS  
AND AWNINGS**



# INSTALLATION & OPERATING INSTRUCTIONS

Instructions and notes for installation and operation

## Radio timer hand-held transmitter HSTX5W/HSTX5G 5-channel

### Attention:

It is important for the safety of persons  
to follow these instructions.  
Keep these instructions for future reference.



# TABLE OF CONTENTS

## Radio timer hand-held transmitter HSTX5W/HSTX5G 5-channel

**!** Safety, disposal and battery instructions Page 3 – 4

**i** **Function overview**

Before commissioning Page 5

Buttons & function Page 5

Technical data Page 5

**🔊** **Programming**

Pairing the hand-held transmitter Page 6

Pairing another hand-held transmitter Page 6

Changing the direction of rotation of the radio motor Page 6

Delete all radio transmitters Page 7

Delete a channel of the radio transmitter Page 7

Roller shutter & blind operating mode Page 7

**⚙️** **Settings**

Set operating mode Page 8

Set uni- or bidirectional mode Page 8

Set time and day of the week Page 9

Auto mode / Set up and down times Page 9 – 10

**✖️** **Troubleshooting**

What to do when ... Page 11

**🇪🇺** **EU Declaration of conformity**

Page 12



**© Copyright notice**

All contents of these instructions, in particular texts, photographs and graphics, are protected by copyright. Unless expressly indicated otherwise, the copyright is held by 3T-Components GmbH & Co. KG. Please ask us if you wish to use the contents of this document.

**✉️ CONTACT**

**3T-Components GmbH & Co. KG**

Grete-Schickedanz-Str. 5  
D-55545 Bad Kreuznach

**Email:** info@3t-components.de

**Tel:** +49 (0)671 887 673-0

**Fax:** +49 (0)671 887 673-99

**Opening hours:**

Monday – Friday  
8.00 – 16.30

Learn more about us:



[www.3t-components.de](http://www.3t-components.de)

# ! SAFETY INSTRUCTIONS

## Please read these important safety instructions before commissioning!

Incorrect installation can cause serious personal injury and damage to property.

Failure to comply with this user information, including all instructions and provisions, will invalidate the warranty.

If these instructions are not followed, the manufacturer or supplier shall not be liable for any personal injury or damage to property.



This symbol indicates danger due to electrical energy.  
Danger to persons and objects may arise if the associated information is not observed!



This symbol indicates general danger.  
Failure to comply may result in danger to persons and property!



This symbol indicates important information that can ensure the safe and proper use of the appliance.

## GENERAL SAFETY INSTRUCTIONS

- Only use suitable AAA batteries (1.5 V) and replace them regularly. Only use the same type of batteries; never mix new and old batteries or different types.
- Dispose of used batteries in an environmentally friendly manner and in accordance with local regulations.
- Do not use any metal tools when inserting or removing the batteries to avoid short circuits. Ensure correct polarity according to the labelling on the device.
- Only store and use the hand-held transmitter in dry places. Moisture and strong mechanical impacts (e.g. knocks, dropping) can damage the device and significantly shorten its service life.
- Keep batteries and hand-held transmitters out of the reach of children. Swallowed batteries can lead to life-threatening injuries. If you suspect that batteries have been swallowed, consult a doctor immediately.
- During installation and use, make sure that no metal objects obstruct the radio signal.

## IMPROPER USE

- The hand-held transmitter must not be used if it is visibly damaged or if moisture has penetrated. In this case, have it checked or replaced by qualified specialist personnel.
- Keep the hand-held transmitter safe and out of the reach of children. Unintentional operation (e.g. by children playing) can trigger dangerous movements of roller shutters or awnings.
- Children must not play with the appliance or operate it unsupervised.
- Please note that there is a risk of injury if used incorrectly.

## PROPER USE

- The hand-held transmitter is designed exclusively for controlling 3T-MOTORS radio tubular motors and 3T-MOTORS radio receivers. Typical applications include roller shutters, awnings and blinds indoors.
- Use is authorised for both private and commercial applications.
- The hand-held transmitter must be programmed correctly before use. Pairing is carried out via buttons on the hand-held transmitter and via the programming process required depending on the receiver or motor (e.g. by pressing the P1 button on the motor head).
- Only properly programmed hand-held transmitters guarantee safe control of the connected motors.
- Instruct all users in safe operation.
- This appliance can be used by children aged from 8 years and above and persons with reduced physical, sensory or mental capabilities if they have been given supervision or instruction concerning use of the appliance.
- Check the functionality of the hand-held transmitter regularly, especially if the range decreases or the response is reduced.

# ! DISPOSAL INFORMATION

---

## 1 Separate collection of old devices

Electrical and electronic appliances that have become waste are referred to as old appliances. Owners of old appliances must dispose of them separately from unsorted municipal waste. In particular, old appliances do not belong in household waste, but in special collection and return systems.

---

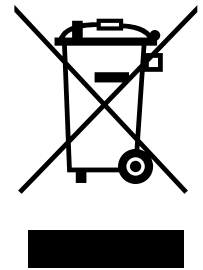
## 2 Options for returning old devices

Owners of old appliances from private households can hand them in at the collection points of the public waste disposal authorities or at the take-back centres set up by manufacturers or distributors within the meaning of the ElektroG.

---

## 3 Meaning of the 'crossed-out wheelie bin' symbol

The symbol of a crossed-out dustbin regularly shown on electrical and electronic appliances indicates that the appliance in question must be collected separately from unsorted municipal waste at the end of its service life.



# ! BATTERY INSTRUCTIONS

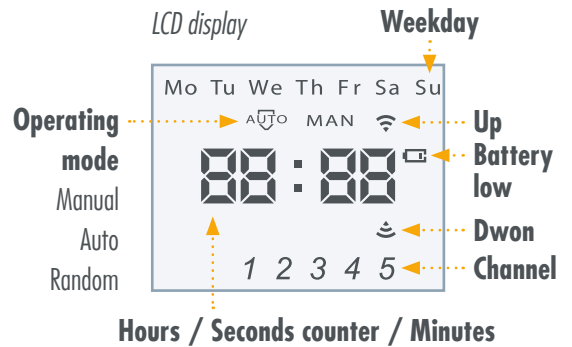
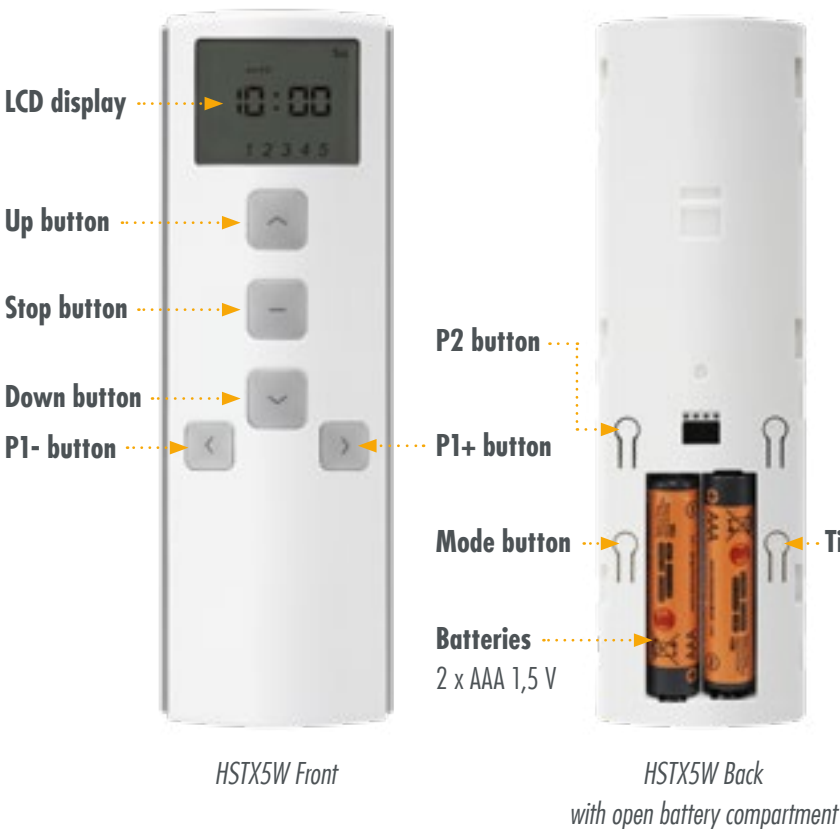
---

- Batteries can be returned free of charge to the point of sale after use.
- The end user is legally obliged to return used batteries.
- At the end of their service life, batteries and accumulators that are no longer usable must not be disposed of with household waste. This is indicated by the crossed-out wheelie bin symbol. The chemical symbols Hg (mercury), Cd (cadmium) or Pb (lead) that may appear below the symbol of the crossed-out dustbin indicate the substances contained.

# i FUNCTION OVERVIEW

## Before commissioning

- 1) Open the battery compartment at the rear.  
To do this, slide the battery compartment cover downwards and lift off the cover.
- 2) Insert AAA batteries (2 pcs.)
- 3) Leave battery compartment open for programming



## Choose channel:

Each number on the LCD display represents a channel. The desired channels can be selected by pressing the P1+ or P1- button. To switch the group channel (all taught-in motors or receivers), press the P1+ or P1- button until all 5 channels are displayed. It is not possible to programme a group channel directly. Several radio motors or radio receivers can be programmed into a group with the same transmission channel.

**Important:** Set the group channel so that all channels are executed with the set times.

## Buttons & function

Up button: Controls the motor upwards  
Down button: Controls the motor downwards  
Stop button: Stops the motor  
P2 button: For programming the transmitter

Mode button: For setting the operating mode  
Time button: For setting the times  
P1- button / P1+ button: Selection channel 1-5

Do not expose the transmitter to moisture or damage it. If the range of the transmitter decreases, the battery should be replaced.

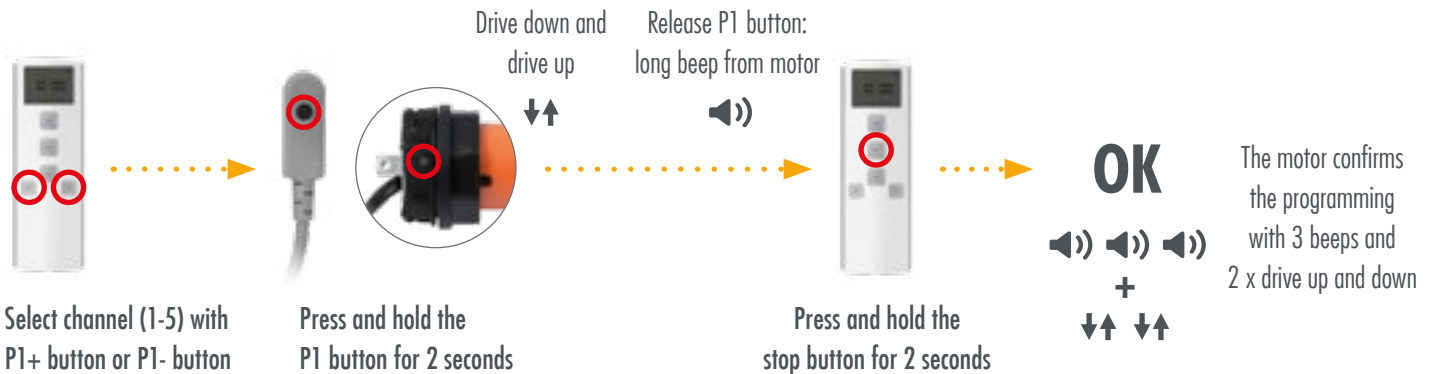


Technical data	
Input voltage	3 V
Frequency	433,05 – 434,79 MHz
Transmission power	≤ 10 mW
Operating temperature range	-10 °C bis +50 °C
Operating range	approx. 30 metres indoors / 150 metres outdoors
Battery type	1,5 V Batteries AAA x 2
EAN	HSTX5W: 4262502531154 / HSTX5G: 4262502531192

# PROGRAMMING

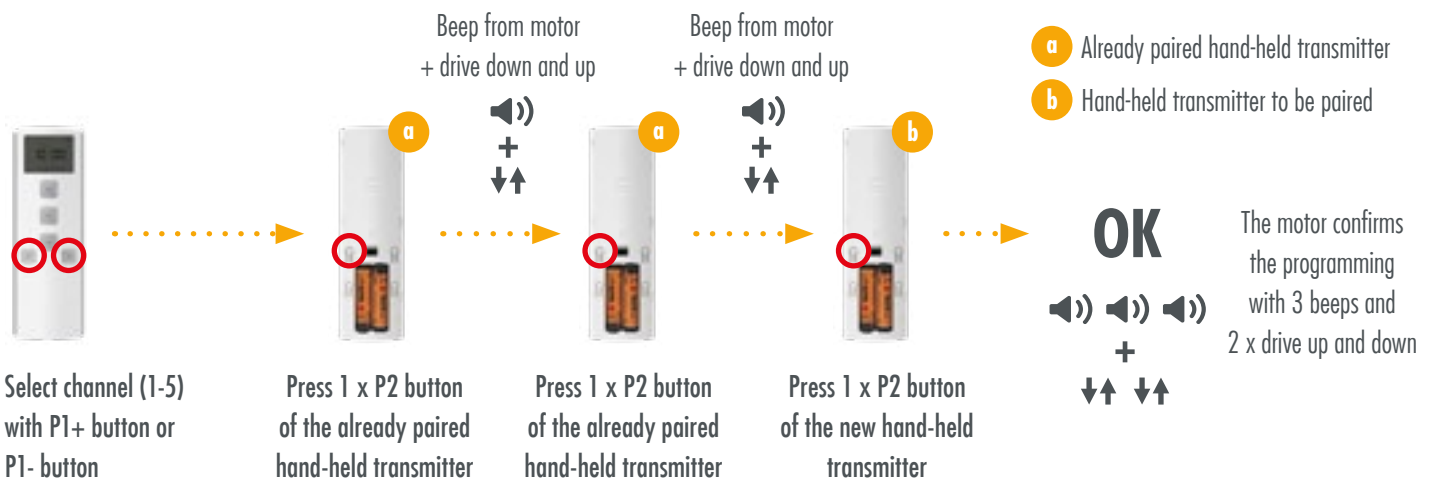
## Pairing the radio hand-held transmitter with 3T radio motor Xseries:

Programming (pressing the buttons) must be carried out within 10 seconds, otherwise the radio transmitter cancels the programming.



## Pairing the radio hand-held transmitter as an additional control:

Programming (pressing the buttons) must be carried out within 10 seconds, otherwise the radio transmitter cancels the programming.



## Change the direction of rotation of radio motor:

Programming (pressing the buttons) must be carried out within 10 seconds, otherwise the radio transmitter cancels the programming.



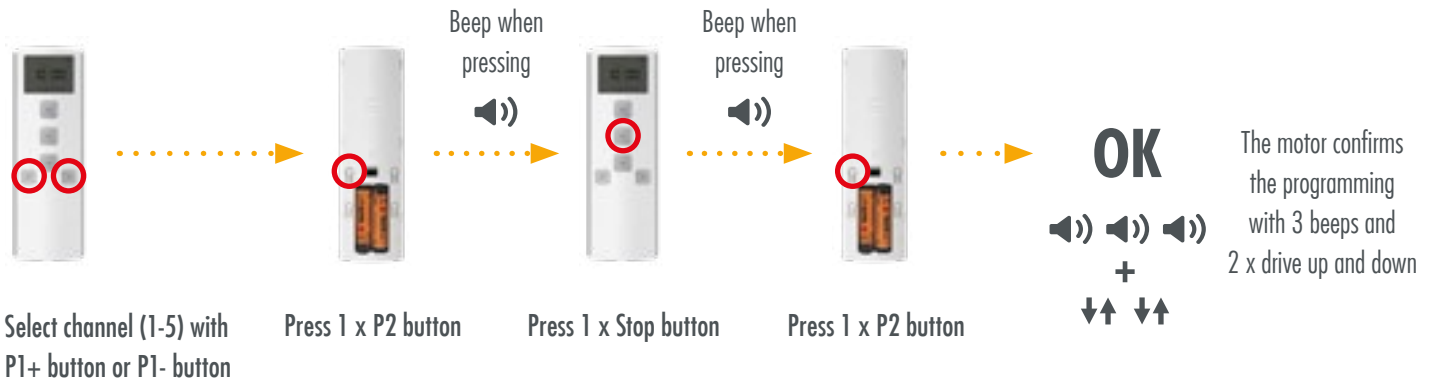
**Only applies to motor type RBX:** The direction of rotation can only be changed if the motor is in the factory state and no end positions have yet been set. If you want to change the direction of rotation, you must reset the motor to the factory setting, see installation and operating instructions for the roller shutter motor.

# PROGRAMMING

## Delete all radio transmitters:

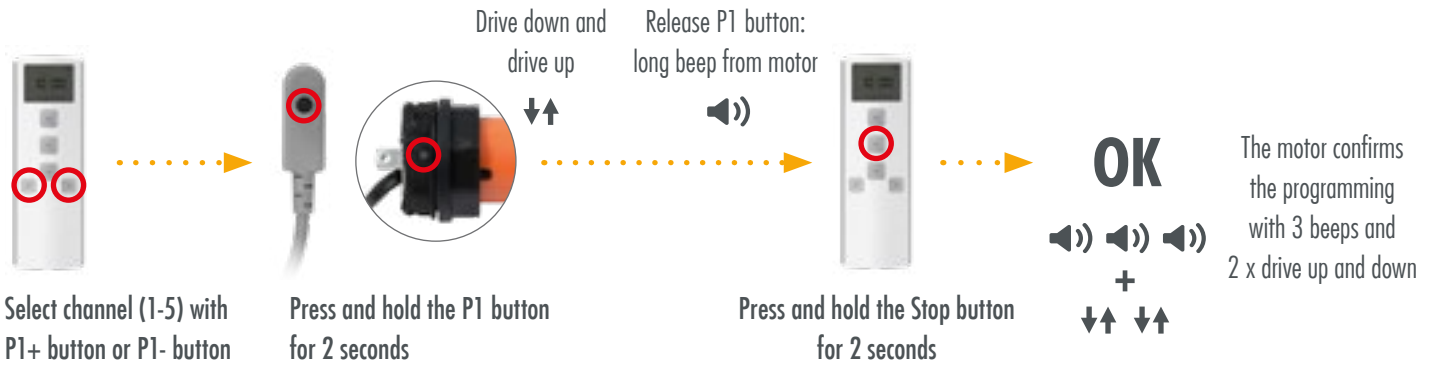
**Caution!** Deletes all paired transmitters on the radio motor.

Programming (pressing the buttons) must be carried out within 10 seconds, otherwise the radio transmitter cancels the programming.



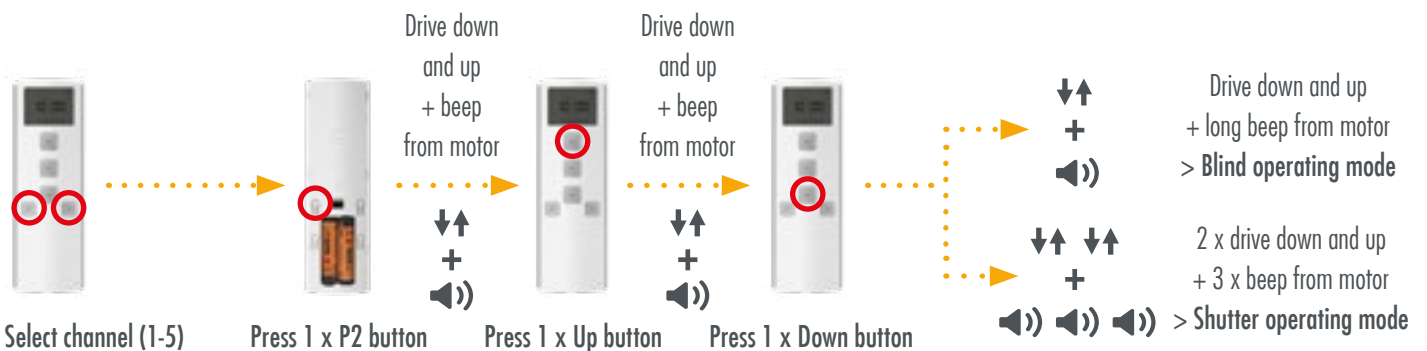
## Delete a channel of the radio transmitter:

Programming (pressing the buttons) must be carried out within 10 seconds, otherwise the radio transmitter cancels the programming.



## Switching the operating mode Shutter and Blind:

Programming (pressing the buttons) must be carried out within 10 seconds, otherwise the radio transmitter cancels the programming.



This setting allows you to switch from shutter mode to blind mode and vice versa.

**Roller shutter operating mode:** Motor immediately switches to self-retaining mode when a direction button is pressed.

**Blind operating mode:** Jog mode possible. Only when the direction button is pressed for longer than 2 seconds is self-holding activated.



**Only applies to motor type RBX:**

To be able to change the operating mode, the end positions must first be set.

## Set operating mode:



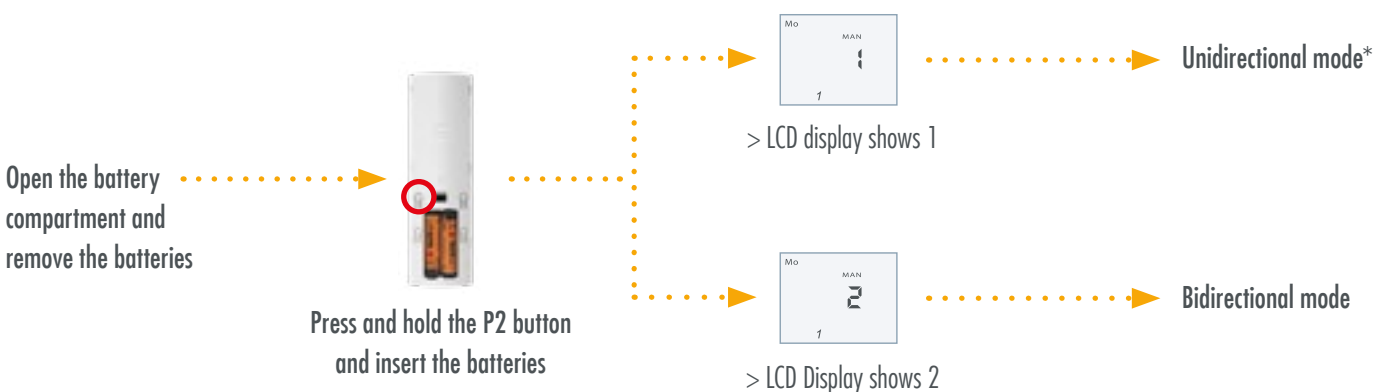
Operating modes		
Manual mode	MAN	Manual control without time function
Auto mode	AUTO	Automatic control with time function / The switching times can be set individually for each day of the week
Weekly programme*		The switching times can be set individually for each day of the week
Daily programme*		A common switching time can be set for the entire week
Working week + Sat and Sun*		The switching times for weekdays (Mon to Fri) and weekends (Sat and Sun) can be set separately
Random mode	AUTO	Identical to Auto mode / random generator shifts the switching times by $\pm 15$ minutes

\* Change auto mode: see Auto mode / Set up and down times (page 7).

## Set uni- or bidirectional mode:

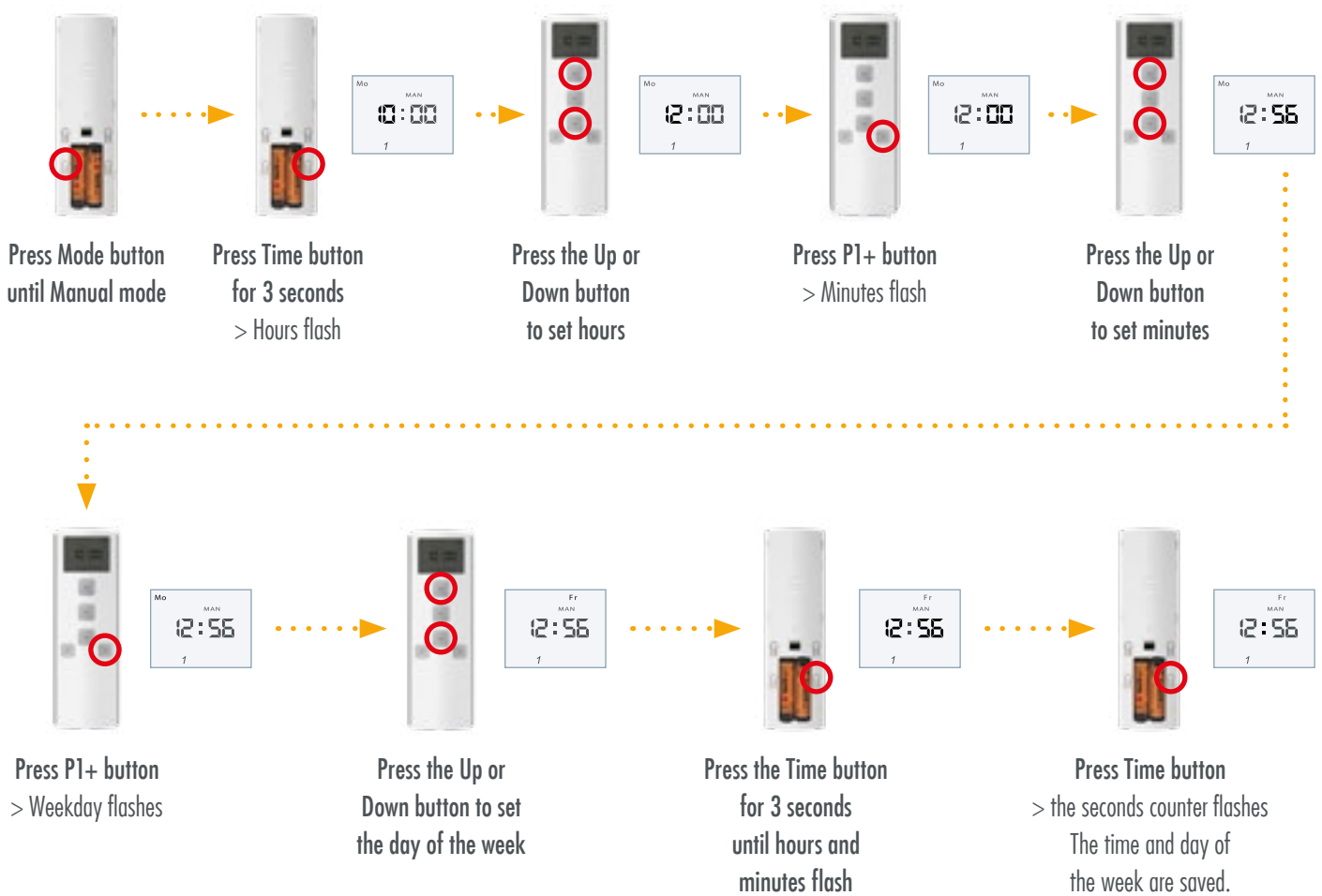


Before programming, make sure that the operating mode matches the radio motor/receiver used! Bidirectional mode is activated as the factory setting. Repeat the procedure to change the operating mode again.

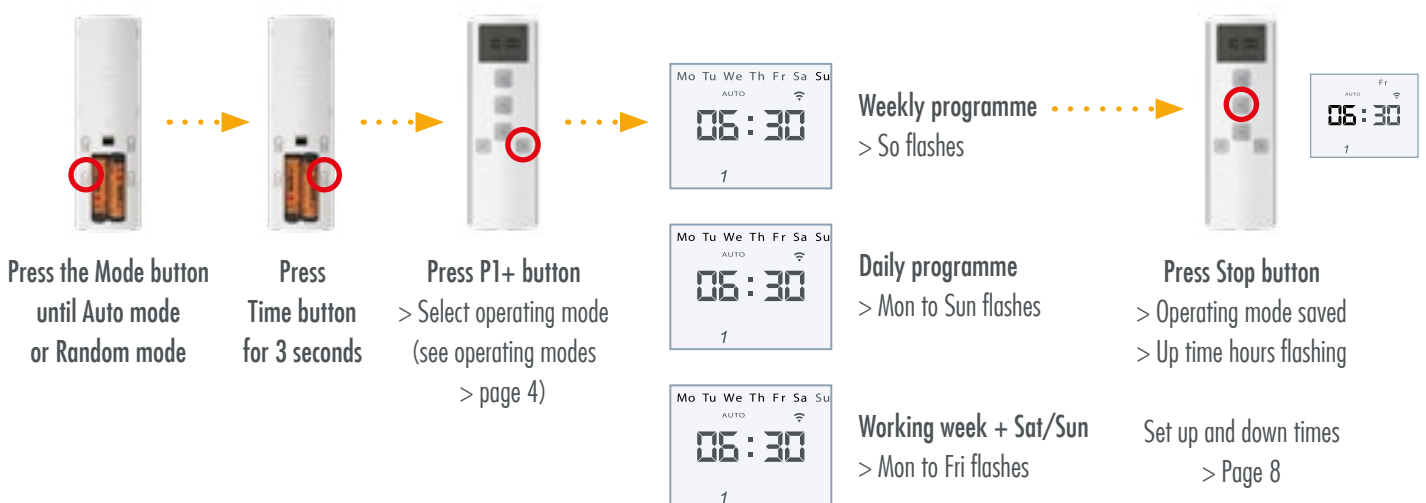


\*Pair unidirectional radio motors according to the instructions for the motor.

## Set time and day of the week:



## Set auto mode / up and down times:



## Set up and down times:



Press the Up or Down button to set the hours



Press P1+ button > Up time minutes flashing



Press the Up or Down button to set the minutes



Press P1+ button > Down time hours flashing



Press the Up or Down button to set the hours



Press P1+ button > Down time minutes flashing



Press the Up or Down button to set the minutes



Press P1+ button > Switching times are saved  
Switching time of next weekday / week section is displayed.  
> Up time hours flash.

Set the up and down times for each day of the week / week section as described above at



After setting the switching times for all days of the week, press the time button for 3 seconds until the hours and minutes flash  
Then release the Time button.

All times are saved.  
The current time and day of the week are displayed.

## WHAT TO DO WHEN ...

### **... the radio hand-held transmitter cannot be paired?**

- The set operating mode does not match the radio motor/receiver used. Set unidirectional or bidirectional mode accordingly (page 8).
  - Group channel set (can only be taught in on channels 1-5).
  - Switch off/on the power supply and carry out the programming procedure again.
  - Battery is too weak or empty.
- 

### **... the radio hand-held transmitter cannot be programmed as an additional transmitter?**

- Group channel set (can only be taught in on channels 1-5).
  - The power supply must remain switched on.
  - It must beep when the buttons are pressed; if it does not beep, keep pressing until it beeps twice for the first transmitter or once for the second transmitter.
  - Battery is too weak or empty.
- 

### **... the automatic switching or holiday switching does not work?**

- Operating mode is not set to automatic mode or random mode
- 

### **... the automatic switching does not work at the set times?**

- Wrong time saved.
  - Incorrect day of the week saved.
  - Incorrect up and down time saved.
- 

### **... blinds or external venetian blinds to be controlled?**

- To change the operating mode from 'Roller shutter' to 'Venetian blind' and vice versa, use the corresponding programming on page 7.

**EU Konformitätserklärung**  
*EU Declaration of Conformity*

**Wir, die Firma**  
*We, the company*

3T Components GmbH & Co. KG  
Grete-Schickedanz-Straße 5  
55545 Bad Kreuznach  
Deutschland

**erklären in alleiniger Verantwortung, dass das weiter unten genannte Produkt**  
*declare under our sole responsibility that the following product*

Geräteart/*Type of product:* Funkfernbedienung / *radio remote control*

Modell <i>Model</i>	Artikelnummer <i>Article-no</i>	weitere Angaben <i>further details</i>
HSX1W/HSX1G	902/906	Batteriebetrieben / <i>battery operated,</i>
HSX15W/HSX15G	903/907	433,05 – 434,79 MHz
HSTX1W/HSTX1G	904/908	
HSTX5W/HSTX5G	905/909	

**die grundlegenden Anforderungen der aufgeführten EU-Richtlinien erfüllt:**

2014/53/EU Richtlinie über die Bereitstellung von Funkanlagen auf dem Markt  
2011/65/EU Richtlinie zur Beschränkung bestimmter gefährlicher Stoffe in Elektro- und Elektronikgeräten

*meets the essential requirements of the following EU-Directives:*

2014/53/EU *Directive on the making available of radio equipment on the market*  
2011/65/EU *Directive on the restriction of the use of certain hazardous substances in electrical and electronic equipment*

angewandte Standards und Verordnungen/*applied standards and regulations:*

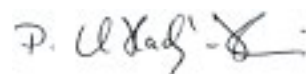
EN 301 489-1 V2.2.3:2019  
EN 301 489-3 V2.3.2:2023  
EN 300 220-2 V3.1.1:2017  
EN 50663:2017  
EN IEC 62368-1:2020/A11:2020  
EN 62368-1:2014/A11:2017

**Bevollmächtigter zur Zusammenstellung der technischen Unterlagen:**  
*Authorized person for technical documentation:*

Name/*Name*, Position: Patrick El Hadj-Henni, Geschäftsführer / *Managing Director*

Bad Kreuznach, 28.04.2025

.....  
Datum/*Date*



.....  
Unterschrift/*Signature*

# INTELLIGENT DRIVES & CONTROLS FOR SHUTTERS AND AWNINGS

*Service and  
quality  
make all the  
difference!*



## Social Media Links

Info, news and tips on roller shutters, awnings, smart home and more:

[www.facebook.com/3TComponents](https://www.facebook.com/3TComponents)



[bit.ly/youtube-3TComponents](https://bit.ly/youtube-3TComponents)



[www.instagram.com/3tcomponents](https://www.instagram.com/3tcomponents)



[x.com/3TComponents](https://x.com/3TComponents)



### 3T-Components GmbH & Co. KG

Grete-Schickedanz-Straße 5  
D-55545 Bad Kreuznach

**Email:** [info@3t-components.de](mailto:info@3t-components.de)

**Tel:** +49 (0)671 887 673-0

**Fax:** +49 (0)671 887 673-99

[www.3t-components.de](http://www.3t-components.de)

### Opening hours:

Monday – Friday: 8.00 – 16.30

**3T-COMPONENTS**  
GmbH & Co. KG